

# Teflon® and Tefzel® Lined Sight

INSTRUMENTS • CONTROLS • VALVES

CLICK TO VISIT OUR WEBSITE

**ARCO**

Engineering, Inc.  
SINCE 1954  
www.arcoengineering.com

3317 Gilmore Industrial Blvd.  
Louisville, KY 40213

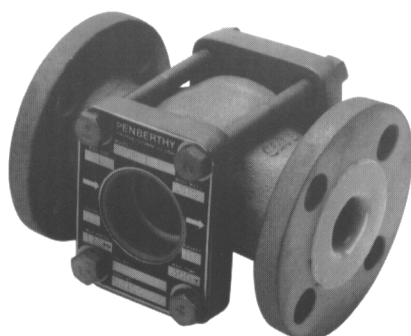
Ph: (502) 966-3134  
Fx: (502) 966-3135

Teflon® and Tefzel® are registered trademarks of DuPont.

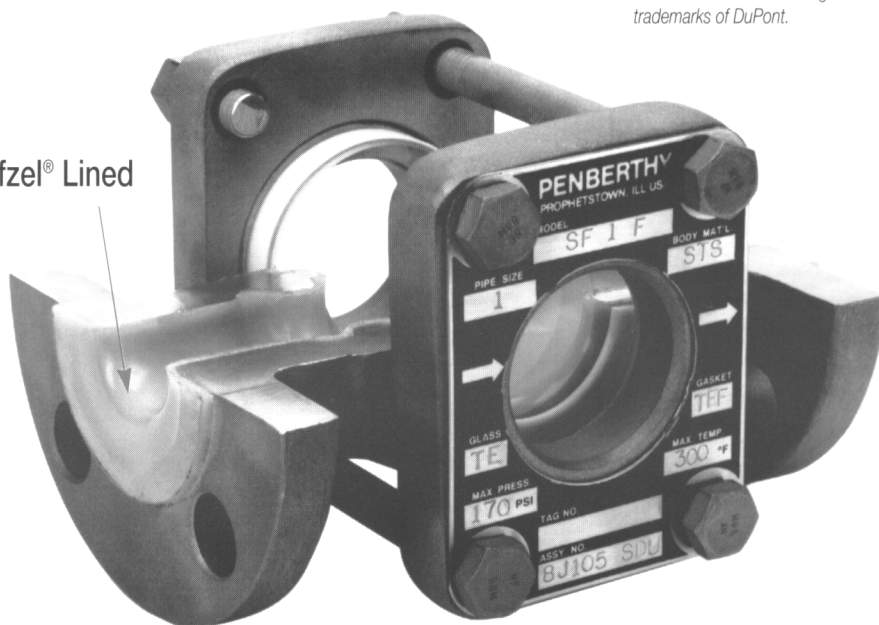
Teflon® Lined



Tefzel® Lined



Tefzel® Lined



These lined sight flow indicators can safeguard against chemical reactions in corrosive environments.

Lined Sight Flow Indicators are designed for viewing corrosive media. Except for the borosilicate glass, the lining of the indicator covers all otherwise wetted parts. The lining provides protection from attack by chemicals and solvents which can cause rapid deterioration of standard plastics and common metals. Lined bodies are available with special Teflon® drip tube or single-sheet flutter flapper indicators.

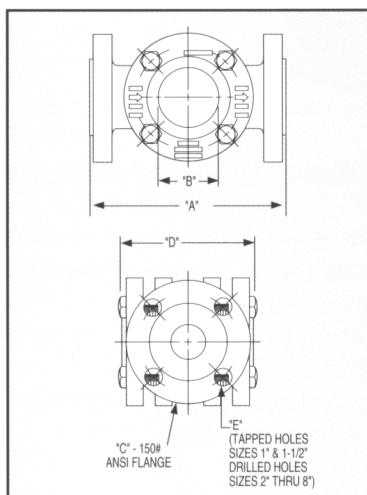
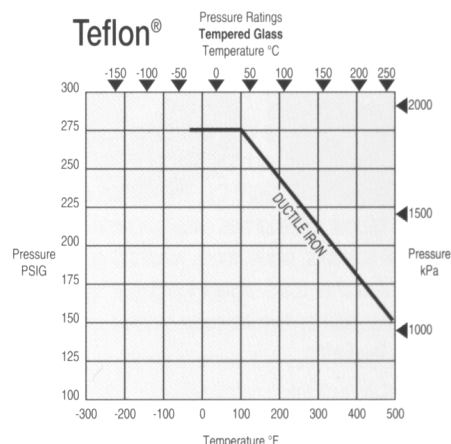
Teflon® resins are essentially chemically inert. The only known chemicals that react with Teflon® are molten alkali metals, turbulent fluorine and a few fluoro-chemicals and halogenated organic chemicals. Teflon® lined bodies are available with drip tube and flutter flapper style indicators. With Teflon® lining the body can only be constructed of iron. Pressure and temperature ratings are shown on the graph at the right.

Tefzel® fluoropolymer resin is inert to strong mineral acids, inorganic bases, halogens and metal salt solutions. The material is ineffective

with organic bases and very strong oxidizing acids near their boiling point. Consult the factory to obtain information about Tefzel® chemical use/temperature guide.

Tefzel® has excellent mechanical strength, stiffness, and abrasion resistance and an effective temperature range from -370° F (-223° C) to 300° F (150° C). Tefzel® lining is available in ALL Penberthy Sight Flow Indicator plain flanged bodies 1" or larger. Pressure and temperature ratings will depend on the materials of construction and sight flow indicator model selected.

Teflon®



Teflon® Dimensions

UNIT SIZE	DIMENSIONS IN INCHES & (CM)				
	"A"	"B"	"C"	"D"	"E"
1	7 (17.8)	1-1/2 (3.8)	1 (2.5)	4-5/8 (11.7)	1/2-13 (1.3)
1-1/2	8 (20.3)	2-3/8 (6.0)	1-1/2 (3.8)	5-5/8 (14.3)	1/2-13 (1.3)
2	9 (22.9)	2-7/8 (7.3)	2 (5.1)	6-5/8 (16.8)	3/4 (1.9)
3	11 (27.9)	3-3/4 (9.5)	3 (7.6)	8-1/4 (21.0)	3/4 (1.9)
4	13 (33.0)	4-3/4 (12.1)	4 (10.2)	9-1/4 (23.5)	3/4 (1.9)
6	16 (40.6)	7 (17.8)	6 (15.2)	12-3/4 (32.4)	7/8 (2.2)
8	18 (45.7)	9 (22.9)	8 (20.3)	16-1/8 (41.0)	7/8 (2.2)

Specifications subject to change without notice.