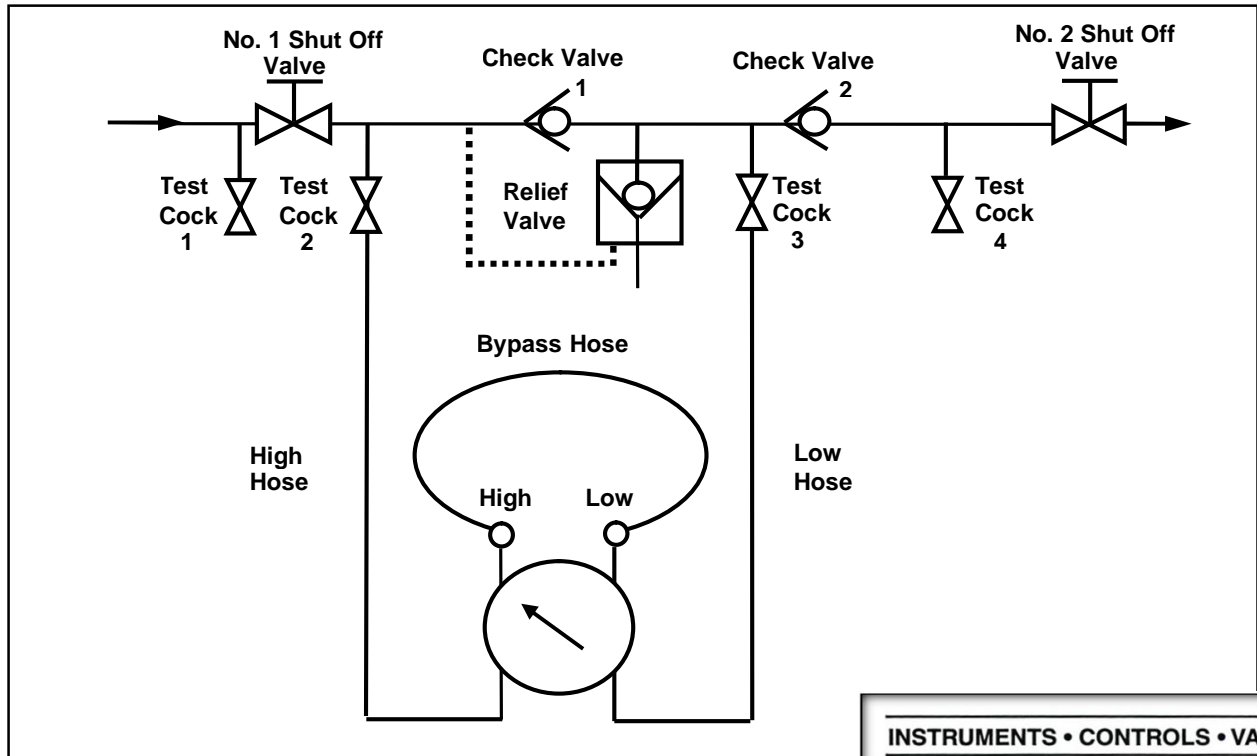


MID-WEST INSTRUMENT – MODEL 845-2 / 2-VALVE TEST KIT

TEST PROCEDURES – REDUCED PRESSURE PRINCIPLE ASSEMBLIES

NOTE: IT IS THE TESTER'S RESPONSIBILITY TO DETERMINE IF THIS PROCEDURE IS ACCEPTED BY LOCAL AUTHORITIES.



TEST SET UP:

1. Obtain permission to shut of the water supply.
2. Determine the direction of flow.
3. Identify all 4 test cocks.
4. All test kits valves are closed.

INSTRUMENTS • CONTROLS • VALVES

ARCO

Engineering, Inc.
SINCE 1954

www.arcoengineering.com

3317 Gilmore Industrial Blvd.
Louisville, KY 40213

Ph: (502) 966-3134
Fx: (502) 966-3135

TEST NO. 1 - DOES THE DIFFERENTIAL PRESSURE RELIEF VALVE OPERATE TO MAINTAIN THE "ZONE" BETWEEN THE TWO CHECK VALVES AT LEAST 2 PSI LESS THAN THE SUPPLY PRESSURE.

1. Open test cock 4 to establish flow through the RP. Flush test cocks in the following order taking care not to dump the relief valve. Open and close test cock 1. **SLOWLY** open and close test cock 2. Open and close test cock 3. Close test cock 4. Install appropriate adapters in all test cocks.
2. Connect the red hose between test cock 2 and the high side connection on the test kit.
3. Connect the green hose between test cock 3 and the low side connection on the test kit.
4. Slowly open test cock 3. Bleed the low side by opening the low (top, right) valve.
5. Slowly open test cock 2. Bleed the high side by opening the high (top, left) valve. Close the high (top, left) valve.
6. After the gauge reaches the upper part of the scale, close the low (top, right) valve.
7. Close the No. 2 shutoff valve and observe the pressure drop across check valve 1. Should the pressure drop until the relief valve discharges continuously, check valve 1 is leaking and must be repaired before continuing.
8. Attach black bypass hose to low valve. Open low valve to bleed air from bypass hose. Close low valve.
9. Open the high valve. Open the low valve no more than one quarter (1/4) turn.

10. Watch the gauge drop **slowly** to the relief valve opening point – record the reading. (If the differential pressure does not drop to the relief valve opening point, close the high and low valves and go to step 12.)
11. Close the high and low valves and go to Test No. 2.
12. No. 2 shutoff valve may be leaking. Reopen and close No. 2 shutoff valve to attempt a better shutoff. Repeat steps 7 through 10. If the relief valve does not open, a by-pass hose is required. (Large leaks may require a garden hose.)
13. Attach a hose (not supplied with Test Kit) to test cock 1. Bleed hose by opening test cock 1. Close test cock 1.
14. Connect the hose from test cock 1 to test cock 4.
15. Open test cock 1 to pressurize the hose.
16. Slowly open test cock 4. Repeat steps 8 through 10. If the relief valve does not open, the leaky No. 2 shutoff valve must be repaired.

TEST NO. 2 – IS CHECK VALVE 2 PRESSURE TIGHT AGAINST BACK PRESSURE.

NO BYPASS HOSE USED IN TEST 1.

1. Disconnect the black bypass hose from the low valve.
2. Bleed bypass hose by opening the high valve. Close the high valve.
3. Attach the loose end of the bypass hose to test cock 4.
4. Open test cock 4.
5. Open the low (top, right) valve allowing the gauge to reach the upper part of the scale. Close the low valve.
6. Open the high (top, left) valve.
7. If the differential pressure stabilizes above the relief valve opening point, check valve 2 is recorded as “tight”. (Proceed to Test No. 3.) If the reading falls to the relief valve opening point, check valve 2 is recorded as “leaking” and test No. 3 cannot be completed.

BYPASS HOSE USED IN TEST 1.

1. Leave the bypass hose connected between test cocks 1 and 4.
2. Leave test cocks 1 and 4 open.
3. Open the low (top, right) valve allowing the gauge to reach the upper part of the scale. Close the low valve.
4. If the differential pressure stabilizes above the relief valve opening point, check valve 2 is recorded as “tight”. (Proceed to test No. 3.) If the reading falls to the relief valve opening point, check valve 2 is recorded as “leaking” and test No. 3 cannot be completed.

TEST NO. 3 – IS THE STATIC PRESSURE DROP ACROSS CHECK VALVE 1 MAINTAINED AT LEAST 3 PSI ABOVE THE RELIEF VALVE OPENING POINT.

1. Open the low (top, right) valve allowing the gauge to reach full scale. Close the low valve.
2. Allow the gauge reading to stabilize. Record this reading as the static pressure drops across check valve 1.
3. Close all test cocks. Open the No. 2 shutoff valve. Remove all test equipment. Drain test kit.

6500 Dobry Drive, Sterling Heights, MI 48314 Tel: 586-254-6500 Fax: 586-254-6509
E-mail: sales@midwestinstrument.com Website: www.midwestinstrument.com